

# RSPB Dungeness and Sound Mirrors Open Day

**Saturday 15 July 2017**

**Drop in between 10am - 3pm**

**Entry fee: £4 per adult, £2 per child, £3 per student (with a valid student card), family: 1 free child per family. Free entry for RSPB members.**

**Please note this fee includes entry to both the Sound Mirrors and our nature trail at our main RSPB Dungeness reserve. CASH ONLY PAYMENTS made at the Sound Mirrors please as we have no facilities for credit cards due to the remote location.**

Come and join us at RSPB Dungeness! See what this fantastic place has to offer and get up close to our fascinating, historical Sound Mirrors (or Listening Ears)! Come along for the day where we open them up for everybody to have a wander around the site and talk to our staff and volunteers about what we are doing to give nature a home here. So why not spend the day surrounded in nature and history and afterwards head to the visitor centre (situated at the Dungeness reserve) for a cup of tea or an ice cream to round the day off nicely.

Please see the maps below for the locations and access to the site, particularly access to the Sound Mirrors on this day. There are two public car parks and various entrances to the site that you may use to access the Sound Mirrors. Please note that the Sound Mirrors site at Lade is approximately 3 miles apart from the main RSPB Dungeness reserve.

Due to the fragile nature of the shingle habitat we ask you to please stick to the pathways and public footpaths. Please note that some of the pathways are made up of loose shingle and may be unsuitable for access by disabled visitors, particularly wheelchairs. The bridge to the Sound Mirrors is very narrow and we regret that wheelchairs and mobility scooters will be unable to cross it. The Dungeness reserve is accessible for wheelchairs and disabled badge visitors may drive to a few places around the trail. Please ask in the visitor centre if you require any assistance.

**The main reserves address is:**

RSPB Dungeness, Boulderwall Farm, Dungeness Road, Lydd, KENT, TN29 9PN

**Bus service:**

Stagecoach bus number 11 - Ashford to Lydd on Sea.

Bus stops are located on Coast Drive and the Parade outside Taylor Road, Derville Road and Seaview Road.

The bus will also stop outside the RSPB Dungeness reserve (Boulderwall Farm) on request.

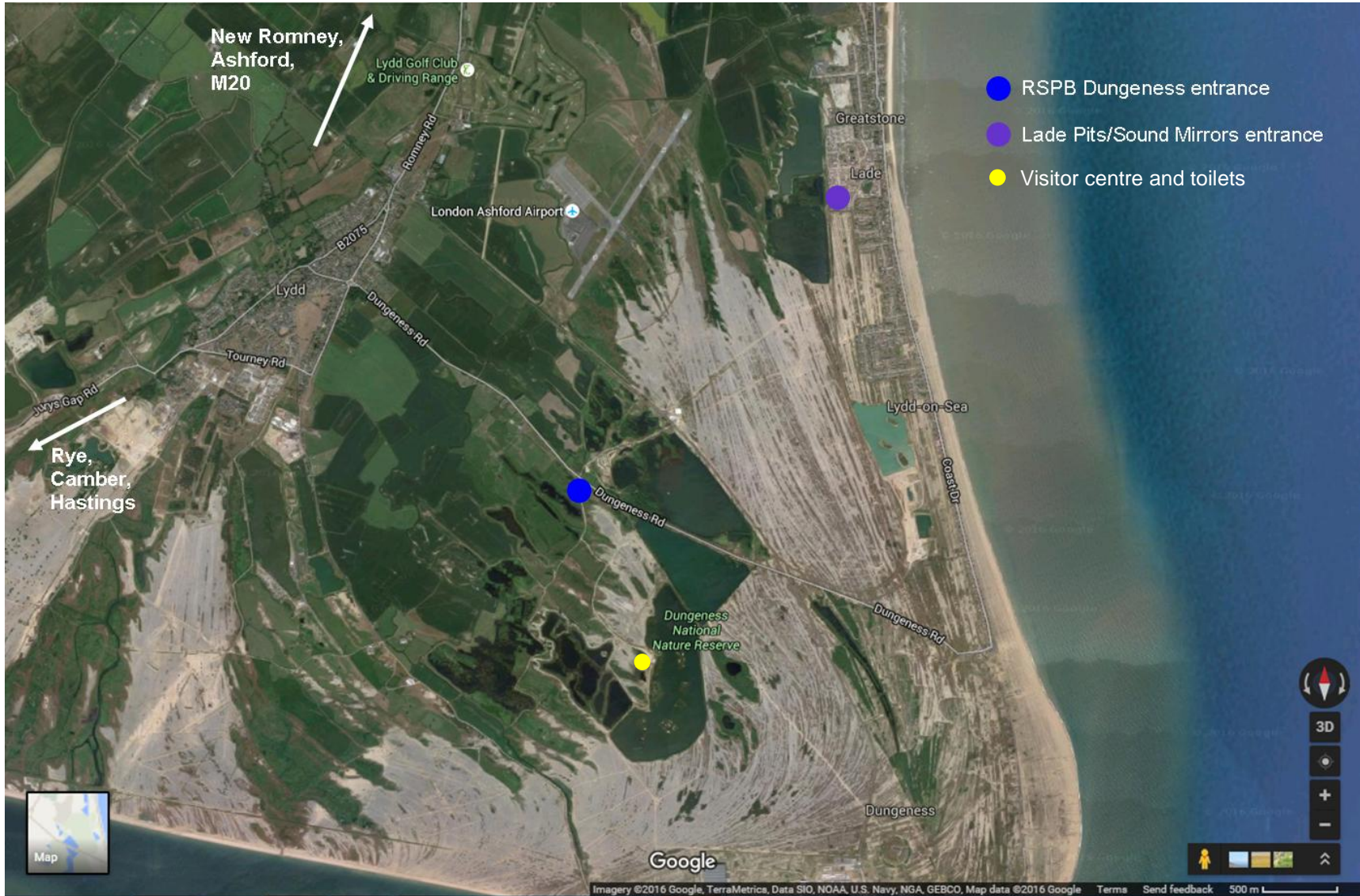
Please follow this link for a full bus timetable: <https://tiscon-maps-stagecoachbus.s3.amazonaws.com/Timetables/South%20East/11%2011A%2011B%20wef%20180115.pdf>

We look forward to seeing you on the day!

Warm regards,

The team at RSPB Dungeness

# RSPB Dungeness and Sound Mirrors Open Day



# RSPB Dungeness and Sound Mirrors Open Day

